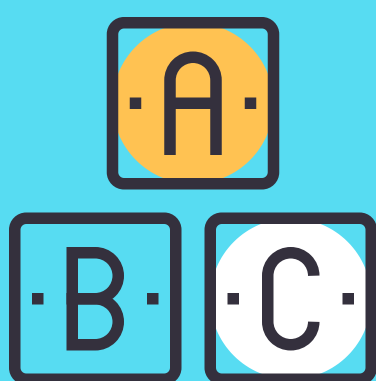


Welcome to Ms. Thompson's English Class!

VIRTUAL LEARNING SYLLABUS

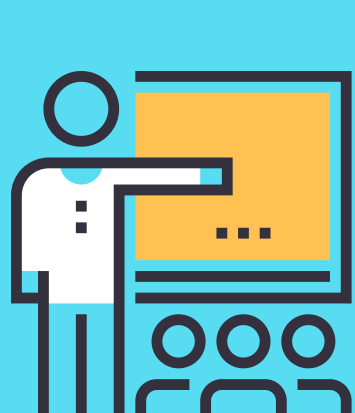


HOW TO CONTACT ME

- I check my email often:
kristy.thompson@hsv-k12.org
- Text or call: 256-577-3546
- DM me on schoology.com
- To schedule an afternoon conference:
<https://calendly.com/kristy-thompson>

INFORMATION & SKILLS FOCUS

We will practice critical thinking, explore writing, and read various genres and authors. World literature is our focus, so we will read texts from diverse cultures and backgrounds. We will do hard things and grow stronger through the struggle.

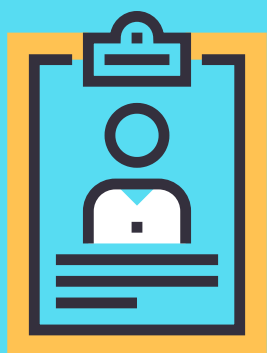


CLASS VALUES

1. We will be respectful and supportive. This includes voices of classmates, authors, characters, etc. We will explore different perspectives.
2. We will try. Giving up is not an option. Fail quickly and try again.
3. We will share power. The teacher is the facilitator not the dictator.
4. We will all be ACTIVE learners.

DIGITAL LEARNING

- 1) Make a REAL attempt to join each of our live classes. I will be explaining all the work, and when you join live, you get to ask questions!
- 2) Stay on top of your assignments. Don't get behind. There will be work to do every day you would have class. (So every other day on the A/B schedule.) Don't skip a day. Don't get behind.
- 3) If you miss class in the morning, watch the video as soon as possible. (So you don't get behind!)
- 4) If you get lost or confused, DO join me during my office hours!



MY WEEKLY SCHEDULE

	A Day	B Day
8:30 – 9:15	English 9 (A1)	English 9 Honors (B1)
9:25 – 10:10	Planning	Planning
10:20 – 11:05	Lit Novels (A3)	ACT Prep (B3)
11:15 – 12:00	English 9 (A4)	English 9 (B4)
12:00 – 1:00	Lunch	Lunch
1:00 – 3:40	Office Hours - Small Group, 1-on-1 with Students, Parent Conference, Other Meetings PRN	Office Hours - Small Group, 1-on-1 with Students, Parent Conference, Other Meetings PRN
Please note: Friday afternoons are reserved for department meetings		

FOR MORE DETAILS ABOUT CURRICULUM AND PROCEDURES, PLEASE BROWSE THE WELCOME FOLDER ON SCHOOLOGY.

All of our work is in Schoology, and all students have access to the site. Please stay apprised of the assignments on the calendar and submit your work to your folders in a timely manner.